

m o o o i[®]



Zio Lounge Chair

by Marcel Wanders

Lean back, close your eyes, relax your arms on the smooth armrests and grant yourself the time to drift your imagination away, beyond your surroundings, into the street, beyond the starry night. Living your fantasies is easy while cosily sitting in the solid softness of Marcel Wanders' Zio lounge chair!

Designer

Marcel Wanders

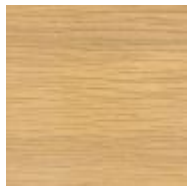
Year of design

2013

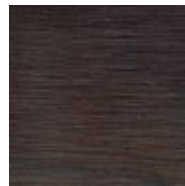
Material

Solid oak frame

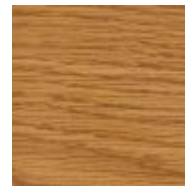
Wood Stained Colours for Container Table top, Bodhi covers & Zio family



White Wash



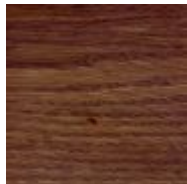
Wenge



Natural Oil



Grey



Cinnamon



Black Stained

Zio lounge chair, dining chair, dining table and coffee tables are also available in a composition of Cinnamon and White Washed stained oak.



Composition



Composition



Composition

cleaning instructions

Moooi recommends using a good furniture polish and a soft cloth. Apply generously in layers to the surface and use the cloth to shine. Do not use abrasive fabrics, gently remove tough stains with warm water and a trusted multi-surface cleaner.

m o o o i[®]

packaging

Zio Lounge Chair

H 86 cm | 33,9"

W 83 cm | 32,7"

D 83 cm | 32,7"

Colli 1/1

With packaging:

15 KG | 33,1 lb

Zio Footstool

H 41 cm | 16,1"

W 59 cm | 23,2"

D 59 cm | 23,2"

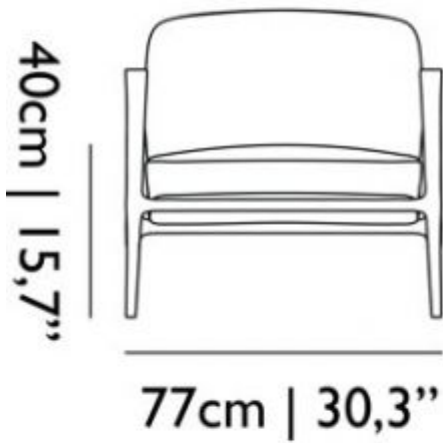
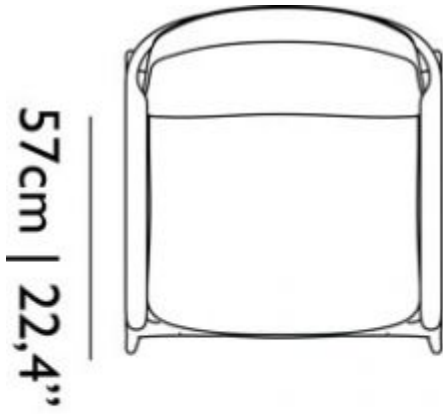
Colli 1/1

With packaging:

10 KG | 22 lb

moooi

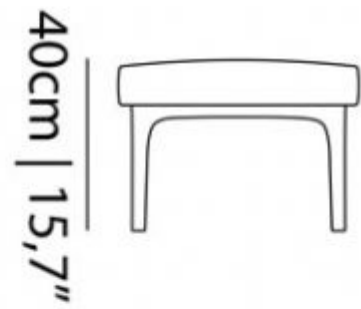
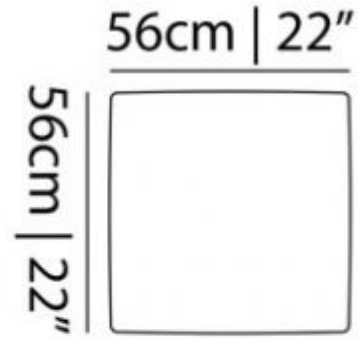
dimensions



77cm | 30,3"



85cm | 33,5"



Macchedil, Grezzo

composition

47% co, 20% vi, 18% pi, 8% li, 5% pc, 2% af

abrasion

18.000 martindale

lightfastness 4

firetest

EN1021 I&2



Macchedil Grezzo
Black indigo



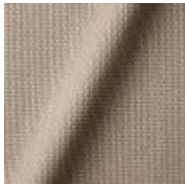
Macchedil Grezzo
Pinkish



Macchedil Grezzo
Off white



Macchedil Gr
Light grey



Macchedil Grezzo
Light brown



Macchedil Grezzo
Grey grey



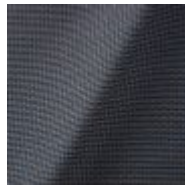
Macchedil Grezzo
Anthracite



Macchedil Gr
Blue grey



Macchedil Grezzo
Cappuccino



Macchedil Grezzo
Deepblue

Macchedil, Sottile

composition

49% vi, 24% pl, 21% li, 6% co

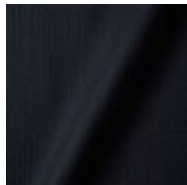
abrasion

30.000 martindale

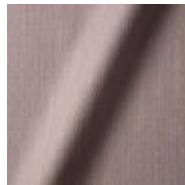
lightfastness 4

firetest

EN1021 I&2



Macchedil Sottile
Black indigo



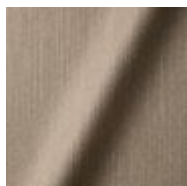
Macchedil Sottile
Pinkish



Macchedil Sottile
Off white



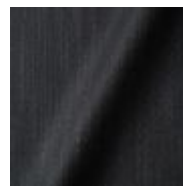
Macchedil So
Light grey



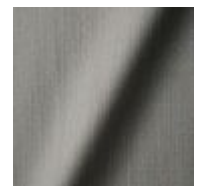
Macchedil Sottile
Light brown



Macchedil Sottile
Grey grey



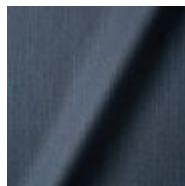
Macchedil Sottile
Anthracite



Macchedil So
Blue grey



Macchedil Sottile
Cappuccino



Macchedil Sottile
Deep blue

m o o o i[®]

Abbracci

composition

100% pl

abrasion

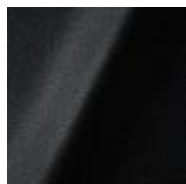
50.000 martindale

lightfastness 4

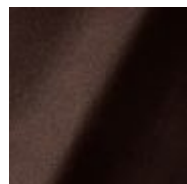
firetest

FR BS5852 0/1

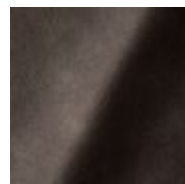
EN1021 I&2



Abbracci
Black



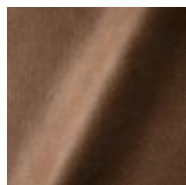
Abbracci
Brown



Abbracci
Grey



Abbracci
Oyster



Abbracci
Taupe

Manga

composition

29% pl, 71% co

abrasion

40.000 martindale

lightfastness 5

firetest

FR BS5852 0/1

EN1021 I&2

m o o o i[®]



Manga
Grey



Manga
Blue



Manga
Green



Manga
Brown

Oray

composition

8% co, 38% vi, 15% pl, 39% li

abrasion

30.000 martindale

lightfastness 4

firetest

FR BS5852 0/I

EN 1021 I&2



Oray
Cream



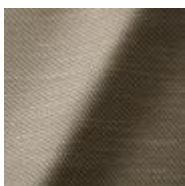
Oray
Sand



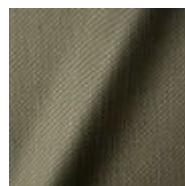
Oray
Rock



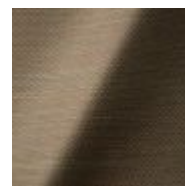
Oray
Mineral



Oray
Gravel



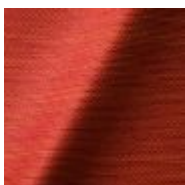
Oray
Dark Gull



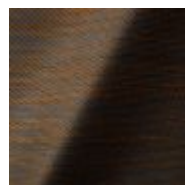
Oray
Copper



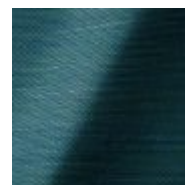
Oray
Rust



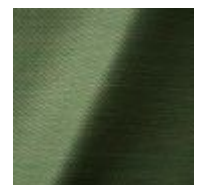
Oray
Flamboyant



Oray
Oil



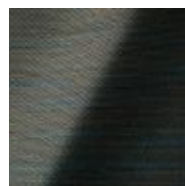
Oray
Aqua



Oray
Peyote



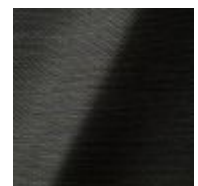
Oray
Ocean



Oray
Metal



Oray
Griffin



Oray
Dusk

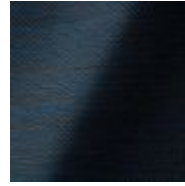
m o o o i[®]



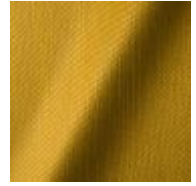
Oray
Chestnut



Oray
Dark



Oray
Indigo



Oray
Ochre

Solis

composition

2% PA 3% PC 30% PL 65% WO

abrasion

40.000 Martindale rubs, EN ISO 12947

lightfastness

Note 5, EN ISO 105-B02

firetest

EN 1021-1/2

US. Cal. Bull. 117-2013

Upon request, with treatment:

BS5852 part I

BS5852 crib 5



Solis
Crust



Solis
Dawn



Solis
Fog



Solis
Gray



Solis
Paper



Solis
Rain



Solis
Spencer



Solis
Suit



Solis
Sunset

m o o o i[®]

Jacquard andaz

composition:

34% cotton - 30% viscose - 24% linen - 12% polyamide

abrasion:

25000 martindale

lightfastness 4-5

firetest:

BS EN 1021 1&2



Jacquard
Andaz

Jaquard Fresco

composition

40% vi ,36% co,14% pl, 10% li

abrasion

20.000> martindale

lightfastness 4-5

firetest

EN1021 1&2



Jaquard
Fresco

m o o o i[®]

Jacquard Old Black & Blue

composition

52% vi, 38% co, 10% li

abrasion

20.000> martindale

lightfastness 4-5

firetest

EN1021 I&2



Jacquard
Old Blue



Jacquard
Old Black

Justo

composition

15% CO, 35% PC, 10% PL, 40% VI

abrasion

50.000 Martindale rubs, EN ISO 12947

lightfastness

Note 5, EN ISO 105-B02

fire test

EN 1021-1/2

US. Cal. Bull. 117-2013

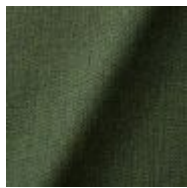
NFPA 260

Upon request, with treatment:

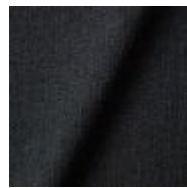
BS5852 part1

BS5852 crib5

m o o o i[®]



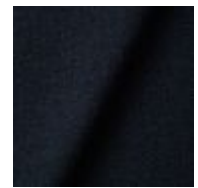
Justo
Alge



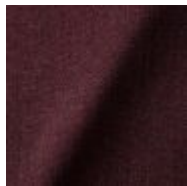
Justo
Bazalt



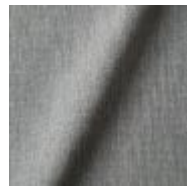
Justo
Bred



Justo
Flod



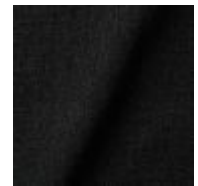
Justo
Hinde



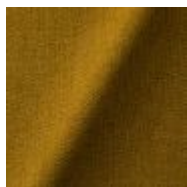
Justo
Lyse



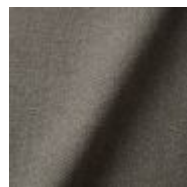
Justo
Muse



Justo
Nat



Justo
Sennep



Justo
Sten

Liscio

composition

35% WO / 35% CV / 21% CO / 9% PA

abrasion

30.000 Martindale

lightfastness

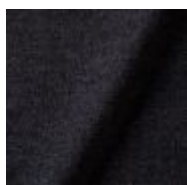
4-6

firetest

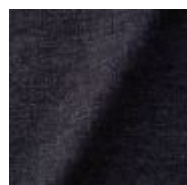
US. Cal. Bull. 117-2013

Upon request, with treatment:

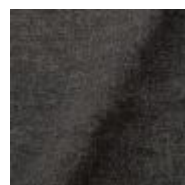
BS5852 part I



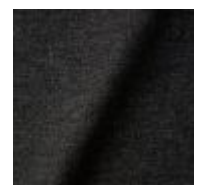
Liscio
**Grigio Blu
Scuro**



Liscio
Grigio Blu



Liscio
Grigio Scuro



Liscio
Muscio Scuro

m o o o i[®]



Liscio
Muscio



Liscio
Argento



Liscio
Nebbia



Liscio
Pietra



Liscio
Perla



Liscio
Latte Scuro



Liscio
Latte

Trickle

composition

60% WO / 20% PES / 20% PA

abrasion

80.000 martindale

lightfastness 6

firetest

EN1021-1/2

US. Cal. Bull. 117-2013

BS5852 part1

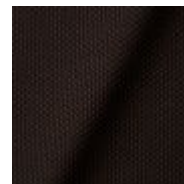
DIN 4102-B2



Trickle
Flour



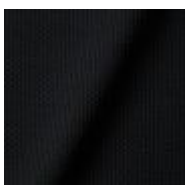
Trickle
Twig



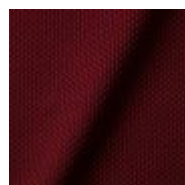
Trickle
Peat



Trickle
Dust



Trickle
Slate



Trickle
Chili



Trickle
Lavender



Trickle
Lagoon

m o o o i[®]

Twill

composition

72% wo, 8% pa, 20% pl

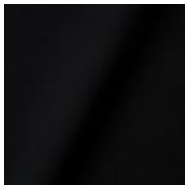
abrasion

75.000 martindale

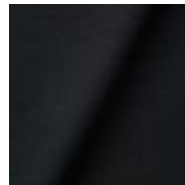
lightfastness 5

firetest

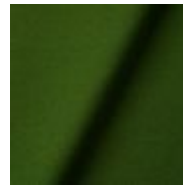
EN1021 I&2



Twill
Caviar



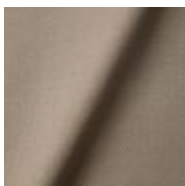
Twill
Graphite



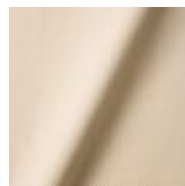
Twill
Grass



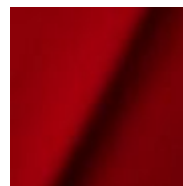
Twill
Grey



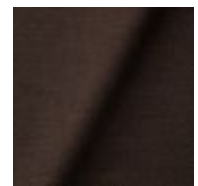
Twill
Linen



Twill
Natural



Twill
Passion



Twill
Walnut

Twill Melange

composition

60% WO / 20% PES / 20% PA

abrasion

80.000 martindale

lightfastness 6-7

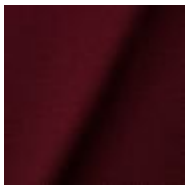
firetest

EN1021-1/2

US. Cal. Bull. 117-2013

BS5852 part I

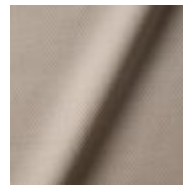
DIN 4102-B2



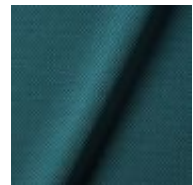
Twill Melange
Chili



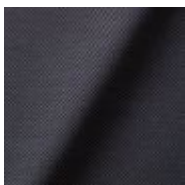
Twill Melange
Dust



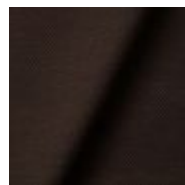
Twill Melange
Flour



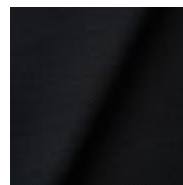
Twill Melange
Lagoon



Twill Melange
Lavender



Twill Melange
Peat



Twill Melange
Slate



Twill Melange
Twig

m o o o i[®]

Velour

composition

77% wo, 8% pa, 15% pl

abrasion

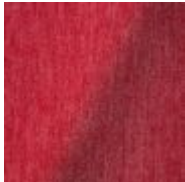
100.000 martindale

lightfastness 7

firetest

FR BS5852 0/1

EN1021 1&2



Velour
Coral



Velour
Stone



Velour
Moss

Vesper

composition

10% CO, 40% L, 10% PA, 10% PL, 30% VI

abrasion

40.000 Martindale rubs, EN ISO 12947

lightfastness

Note 5, EN ISO 105-B02

firetest

EN 1021-1/2

US. Cal. Bull. 117-2013

Upon request, with treatment:

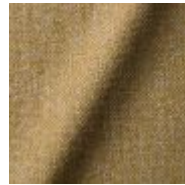
BS5852 part I

BS5852 crib5

m o o o i[®]



Vesper
Aluminium



Vesper
Brass



Vesper
Bronze



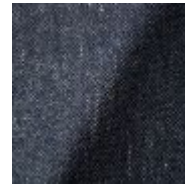
Vesper
Carbon



Vesper
Nickel



Vesper
Silver



Vesper
Steel

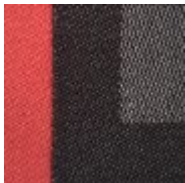


Vesper
Titan

Tartanic

composition

64% VI / 27% CO / 9% PA



Arredo Leather

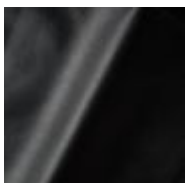
composition

100% semi aniline leather

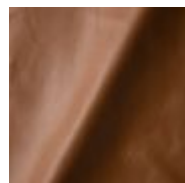
Leather is a natural product, colours may vary from hide to hide.

firetest

EN1021 I&2



Arredo Leather
Black



Arredo Leather
Brown



Arredo Leather
White

Cervino Leather

composition

100% aniline leather

Leather is a natural product, colours may vary from hide to hide.

firetest

EN1021 I&2



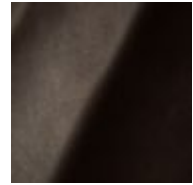
Cervino Leather
Anthracite



Cervino Leather
Cognac



Cervino Leather
Mud



Cervino Leather
Pure

Kvadrat Fabrics

Kvadrat Fabrics

Selected Moooi products can be upholstered with a collection of Kvadrat fabrics. Kvadrat designs high-quality upholstery, in an extensive range of colours and textures.

Go to our Kvadrat fabrics page for a full overview of all fabric families you can choose from.



m o o o i[®]

Dodo Pavone

composition

12% CO 88% PL

abrasion

40.000 Martindale rubs, EN ISO 12947

lightfastness

Note 5, EN ISO 105-B02

firetest

US. Cal. Bull. 117-2013

Upon request, with treatment:

BS5852 part I



Bearded leopard Jacquard

composition

77% VI / 15% PES / 7% CO / 1% PA

abrasion

15.000 Martindale rubs, EN ISO 12947

lightfastness

Note 4-6, EN ISO 105-B02

firetest

EN1021-1/2

Upon request and with treatment:

BS5852 part I

m o o o i[®]



Blushing Sloth Melange Mohair

composition

29% LANA / 24% LANA WM / 24% PES / 15% PA / 8% CO

abrasion

40.000 Martindale rubs, EN ISO 12947

lightfastness

Note 4-6, EN ISO 105-B02



Blushing Sloth Woolly Mohair

composition

85% WV / 15% WM

abrasion

15.000 Martindale rubs, EN ISO 12947

lightfastness

Note 4-6, EN ISO 105-B02

firetest

EN1021-1/2

BS5852 part I

m o o o i[®]



**Extinct
Animals
Fabric**

Collection

Blushing Sloth
Woolly Mohair

Calligraphy Bird Jacquard

composition

64% VI, 21% PES, 15% CO

abrasion

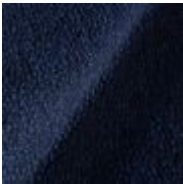
50.000 Martindale rubs, EN ISO 12947

lightfastness

Note 4-6, EN ISO 105-B02

firetest

Upon request, with treatment;
BS5852 part I



Extinct Animals
Fabric Collection
Calligraphy Bird
Jacquard



The Silent Bison Velvet

composition

100% CO

abrasion

30.000 Martindale rubs, EN ISO 12947

lightfastness

Note 4-6, EN ISO 105-B02



The Menagerie of Extinct Animals

composition

100% PES

abrasion

50.000 Martindale rubs, EN ISO 12947

lightfastness

Note 4-6, EN ISO 105-B02

firetest

EN1021-1/2

Upon request, with treatment;

BS5852 part I

Flying Coral Fish Scaled

m o o o i[®]



Extinct

Animals

Fabric

Collection

Flying Coral Fish

Scaled

Type

Pure aniline,

nubuck finish

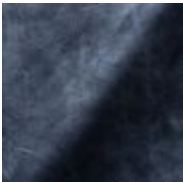
Dwarf Rhino Buffed

composition

100% steer

Type

Pure aniline, nubuck finish



Extinct Animals

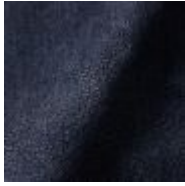
Fabric Collection

Dwarf Rhino

Buffed

Dwarf Rhino Crackle

m o o o i[®]



**Extinct
Animals
Fabric
Collection**
Dwarf Rhino
Crackle

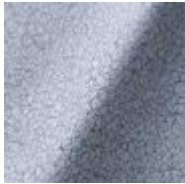
Armoured Boar Crackle

composition

100% cow hide

Type of leather

Pure aniline, nubuck finish



Armoured Boar Hairy

composition

100% cow skin

lightfastness

>3, ISO 105-B02:2004

